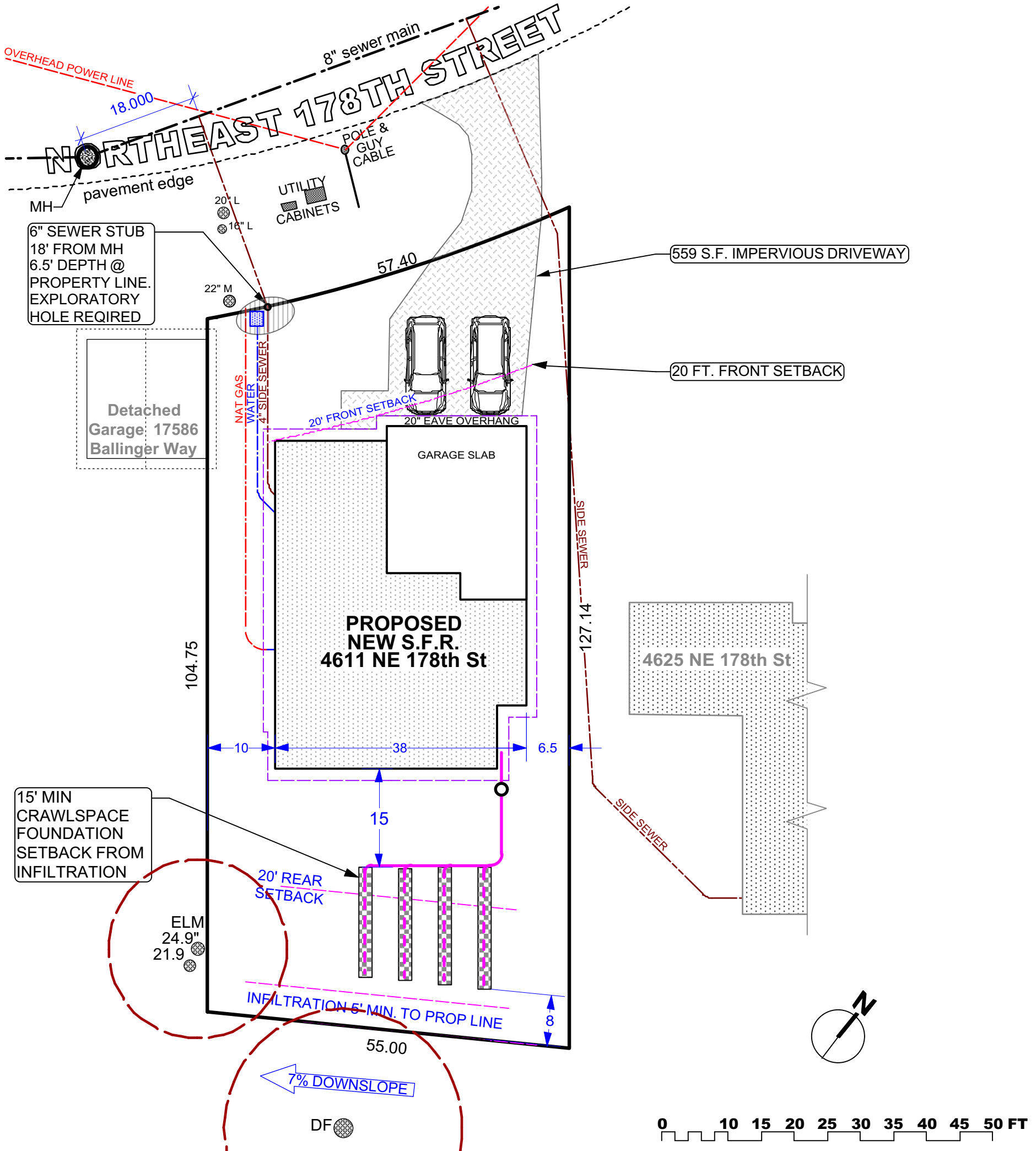


NOTE: In order to keep pace with the compilation of comments, argument, rebuttals and information over the last 5 months, these revised drawings will be considered the final and only drawing to be referenced for 2018-RUE-0001.
Revised 10/10/18

REASONABLE USE OPTION 1

- REMOVE #6 DF 52" EXCEPTIONAL
- REMOVE #10 DF 42" EXCEPTIONAL
- CONNECT TO EXISTING SEWER STUB DEDICATED TO THE PARCEL
- MINIMUM IMPERVIOUS ADDITION TO PROPERTY

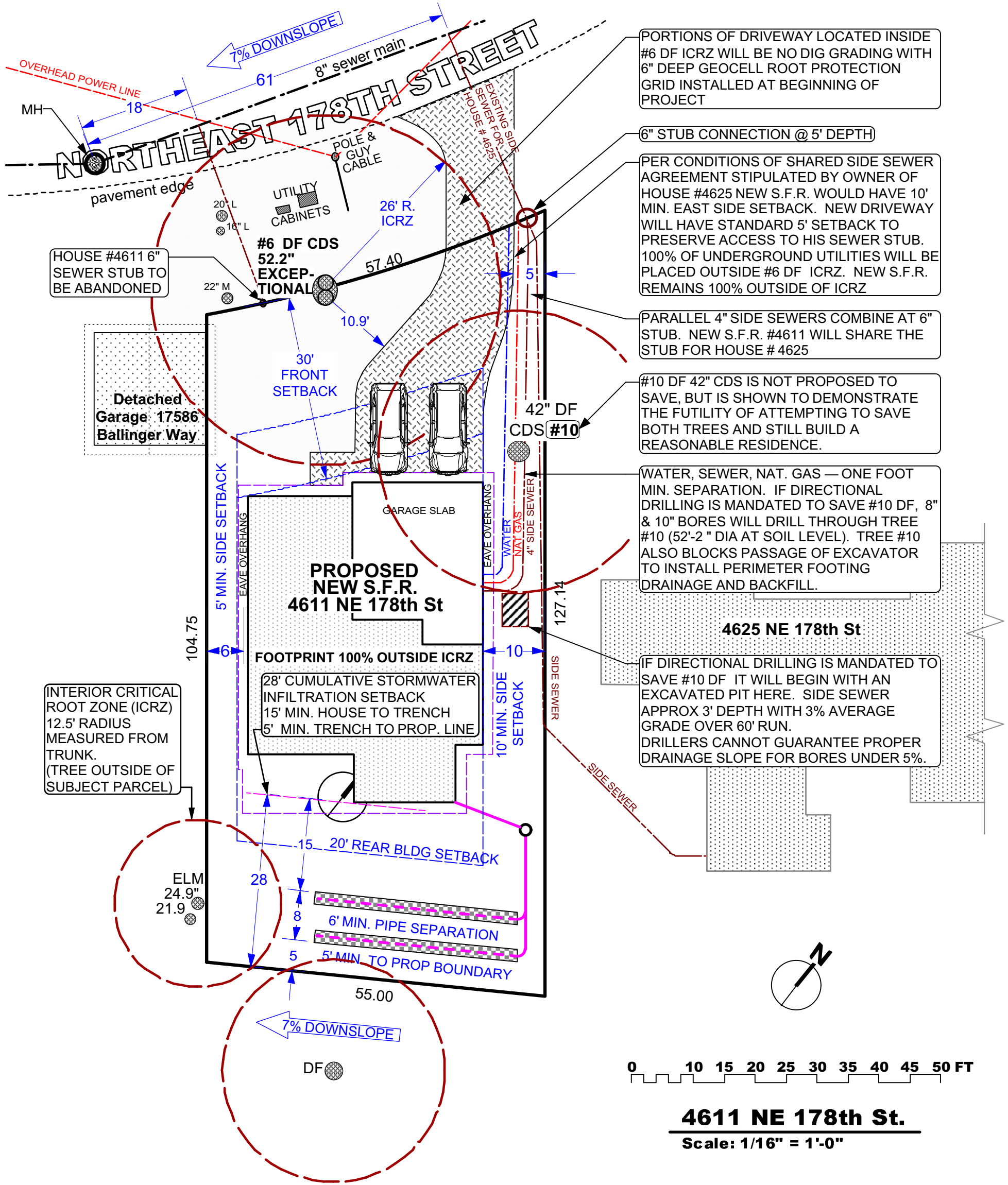


4611 NE 178th St.
Scale: 1/16" = 1'-0"

NOTE: In order to keep pace with the compilation of comments, argument, rebuttals and information over the last 5 months, these revised drawings will be considered the final and only drawing to be referenced for 2018-RUE-0001.
 Revised 10/10/18

REASONABLE USE OPTION 2

- PRESERVE #6 DF 52" EXCEPTIONAL
- REMOVE #10 DF 42" EXCEPTIONAL
- UTILITIES AND S.F.R. FOOTPRINT 100% OUTSIDE ICRZ.
- SHARED SEWER STUB WITH EAST NEIGHBOR
- DRIVEWAY INSIDE #6 DF WILL BE NO DIG GRADING WITH 6" GEOCELL ROOT PROTECTION GRID.



PORCTIONS OF DRIVEWAY LOCATED INSIDE #6 DF ICRZ WILL BE NO DIG GRADING WITH 6" DEEP GEOCELL ROOT PROTECTION GRID INSTALLED AT BEGINNING OF PROJECT

6" STUB CONNECTION @ 5' DEPTH

PER CONDITIONS OF SHARED SIDE SEWER AGREEMENT STIPULATED BY OWNER OF HOUSE #4625 NEW S.F.R. WOULD HAVE 10' MIN. EAST SIDE SETBACK. NEW DRIVEWAY WILL HAVE STANDARD 5' SETBACK TO PRESERVE ACCESS TO HIS SEWER STUB. 100% OF UNDERGROUND UTILITIES WILL BE PLACED OUTSIDE #6 DF ICRZ. NEW S.F.R. REMAINS 100% OUTSIDE OF ICRZ

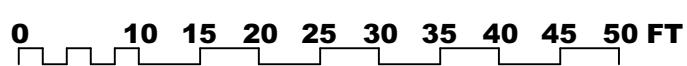
PARALLEL 4" SIDE SEWERS COMBINE AT 6" STUB. NEW S.F.R. #4611 WILL SHARE THE STUB FOR HOUSE # 4625

#10 DF 42" CDS IS NOT PROPOSED TO SAVE, BUT IS SHOWN TO DEMONSTRATE THE FUTILITY OF ATTEMPTING TO SAVE BOTH TREES AND STILL BUILD A REASONABLE RESIDENCE.

WATER, SEWER, NAT. GAS — ONE FOOT MIN. SEPARATION. IF DIRECTIONAL DRILLING IS MANDATED TO SAVE #10 DF, 8" & 10" BORES WILL DRILL THROUGH TREE #10 (52'-2" DIA AT SOIL LEVEL). TREE #10 ALSO BLOCKS PASSAGE OF EXCAVATOR TO INSTALL PERIMETER FOOTING DRAINAGE AND BACKFILL.

IF DIRECTIONAL DRILLING IS MANDATED TO SAVE #10 DF IT WILL BEGIN WITH AN EXCAVATED PIT HERE. SIDE SEWER APPROX 3' DEPTH WITH 3% AVERAGE GRADE OVER 60' RUN. DRILLERS CANNOT GUARANTEE PROPER DRAINAGE SLOPE FOR BORES UNDER 5%.

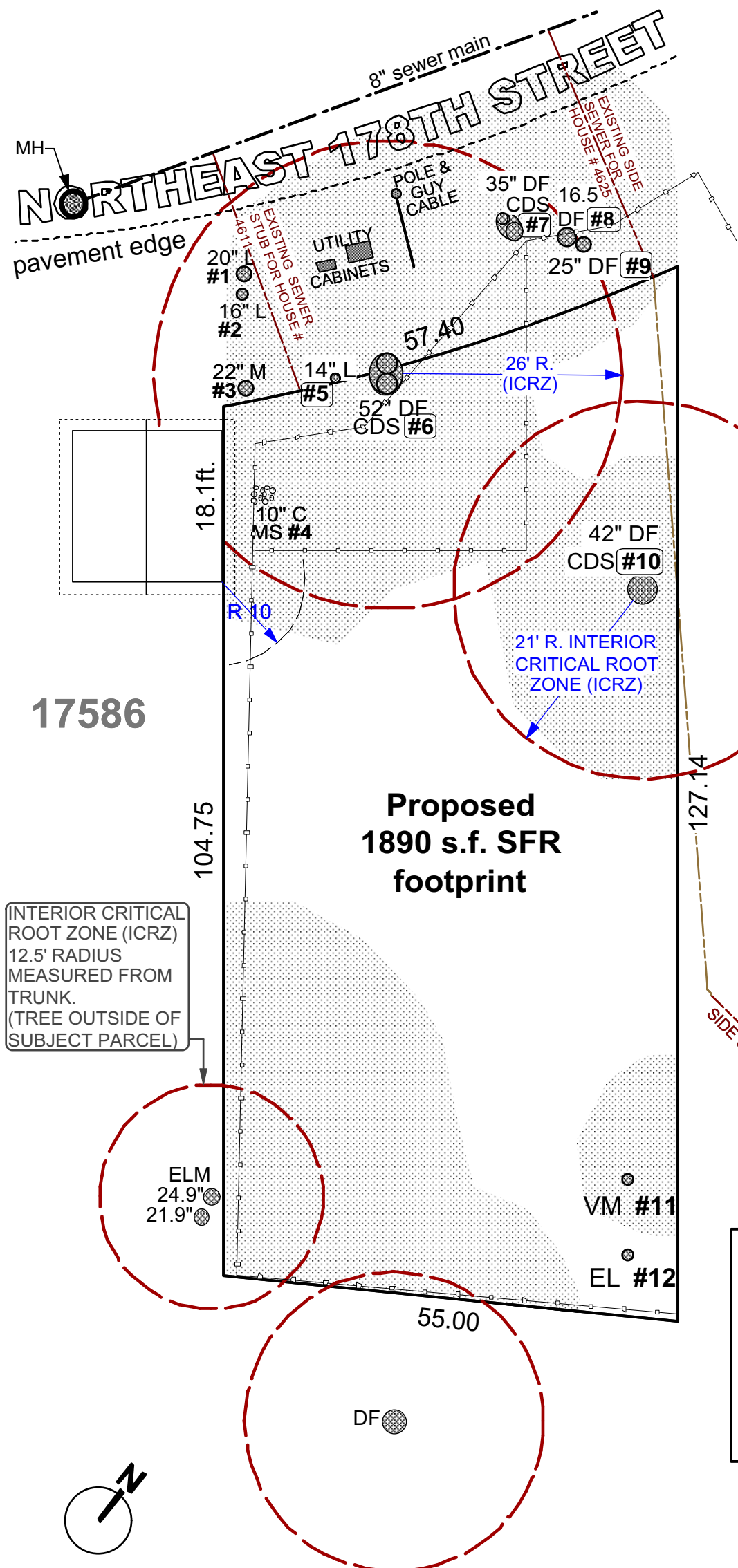
INTERIOR CRITICAL ROOT ZONE (ICRZ) 12.5' RADIUS MEASURED FROM TRUNK. (TREE OUTSIDE OF SUBJECT PARCEL)



4611 NE 178th St.
 Scale: 1/16" = 1'-0"

NOTE: In order to keep pace with the continual compilation of comments, argument, rebuttals and information over the last 5 months, these revised drawings will be considered the final and only drawing to be referenced for 2018-RUE-0001. Revised 10/10/18

EXISTING TREES AND CANOPY

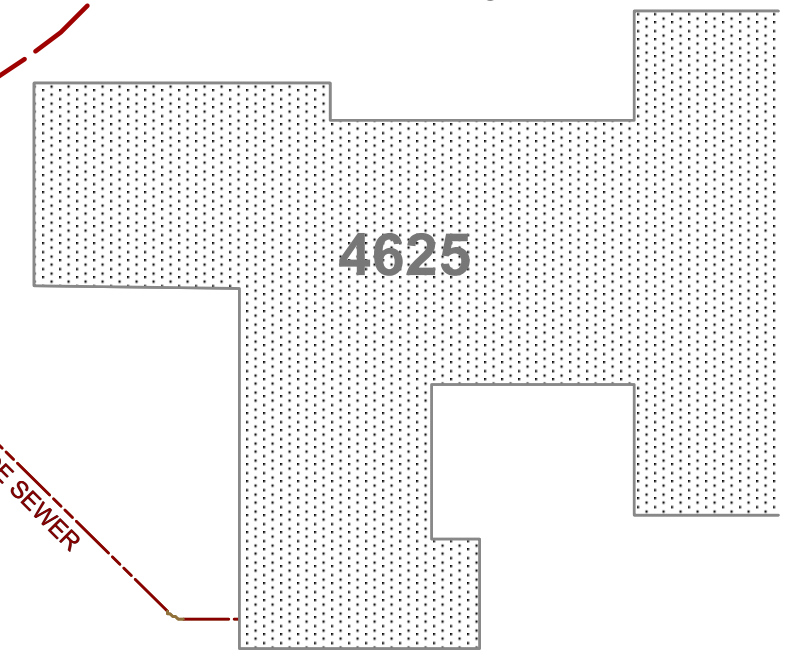


TREE SPECIES LEGEND

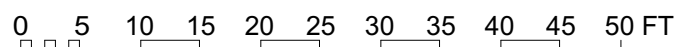
- M** Bigleaf Maple (*Acer macrophyllum*)
- DF** Douglas Fir (*Pseudotsuga menziesii*)
- L** Black Locust (*Robinia pseudoacacia*)
- VM** Vine Maple (*Acer circinatum*)
- C** Western Red Cedar (*Thuja plicata*)
- EL** English Laurel (*Prunus laurocerasus*)
- ELM** American Elm (*ulmus americana*)
- MS** Multiple Stem
- CDS** Co-dominant Stem
- MS** Multiple Stem

TREE REMOVAL LIST

- #5 M 14" *Robinia pseudoacacia*
- #6 DF 52" *Pseudotsuga menziesii* CDS
- #7 DF 35" *Pseudotsuga menziesii* CDS
- #8 M 16.5" *Acer macrophyllum*
- #9 M 25" *Acer macrophyllum*
- #10 DF 42" *Pseudotsuga menziesii* CDS



King Co Parcel: 401930-1515
Lot Size: 6875 s.f.
Zoning: RS-15,000
Existing Tree Canopy: 72% (4980 s.f.)
Target Tree Canopy: 28% (1925 s.f.)
Proposed Canopy: 31% (2128 s.f.)



SITE PLAN & EXISTING TREE CANOPY -- 4611 NE 178th St.

Scale: 1/16" = 1'-0"